

Filling Capacity

at filling ratio 63 kg / 1:20 50 kg / 1:25 42 kg / 1:30

Water Evaporation

filling ratio / steam heating - 10 bar saturated steam 1:30 132 l/h = 2,2 l/min
evaporation depending on local conditions

Drum

diameter x depth 1270 x 1000 mm
volume 1260 dm³

Standard Version

- Cyclic loading at front with lifting door
- Automatic, pneumatic unloading at the rear by lifting door
- Steam heating up to 15 bar
- Electronic temperature indication exhaust air
- Control for automatic operation as single- resp. Installation unit
- Large lint bag
- Touchscreen control
- Radial-diagonal air flow
- Pedestal height 1000mm
- Drum of stainless steel
- Thermost.-electric overdrying protection ÜS via infrared
- Drum drive by friction wheel, reversible by means of V-belt and socket gear
- Colour: RAL 5018 turquoise blue
- Electric supply: 3/N ~ 50Hz, 400/230 V
- Easy maintenance and inner surface cleaning
- Machine equipped in accordance with relevant safety standards

Special Version

- Automatic tilt-unloading at the rear
- Thermostatic-electronic temperature control with steam valve
- Cool down system, time controlled
- Thermostatic-electronic temperature control of inlet- and exhaust air (SAT)
- Recirculation system for optimal finish
- Additional heat- an noise insulation
- Steam trap
- Sprinkler device
- Drum poly-coated
- Special voltage, special frequency
- CSA-, Nema/UL-regulation
- Special finish
- Special pedest heights: 1250mm, 1500mm, 1750mm, 2000mm
- Tilting version-pedestal + 100 mm
- Add. Heating battery for heigher evaporation
- Heating battery in stainless steel for hot oil (225°C) / for hot water (200°C)
- Heating battery with TÜV- resp. SA-Certificate

Accessories

transport units for loading and unloading

Connected Load and Consumption Rate

	Connected Load	Consumption
Electric - without transport units	7,2 kW	6,1 kW
Saturated steam 10 bar units	295 kg/h	225 kg/h
Nominal heating capacity	130 kW	
Hot oil 225/180°C or Hot water 200/180°C	6000 l/h	max. 6000 l/h
Compressed air 6 bar, 6 charges/h suction capacity	250 l/h	200 l/h

Consumption depending on local conditions

Exhaust Air Rate

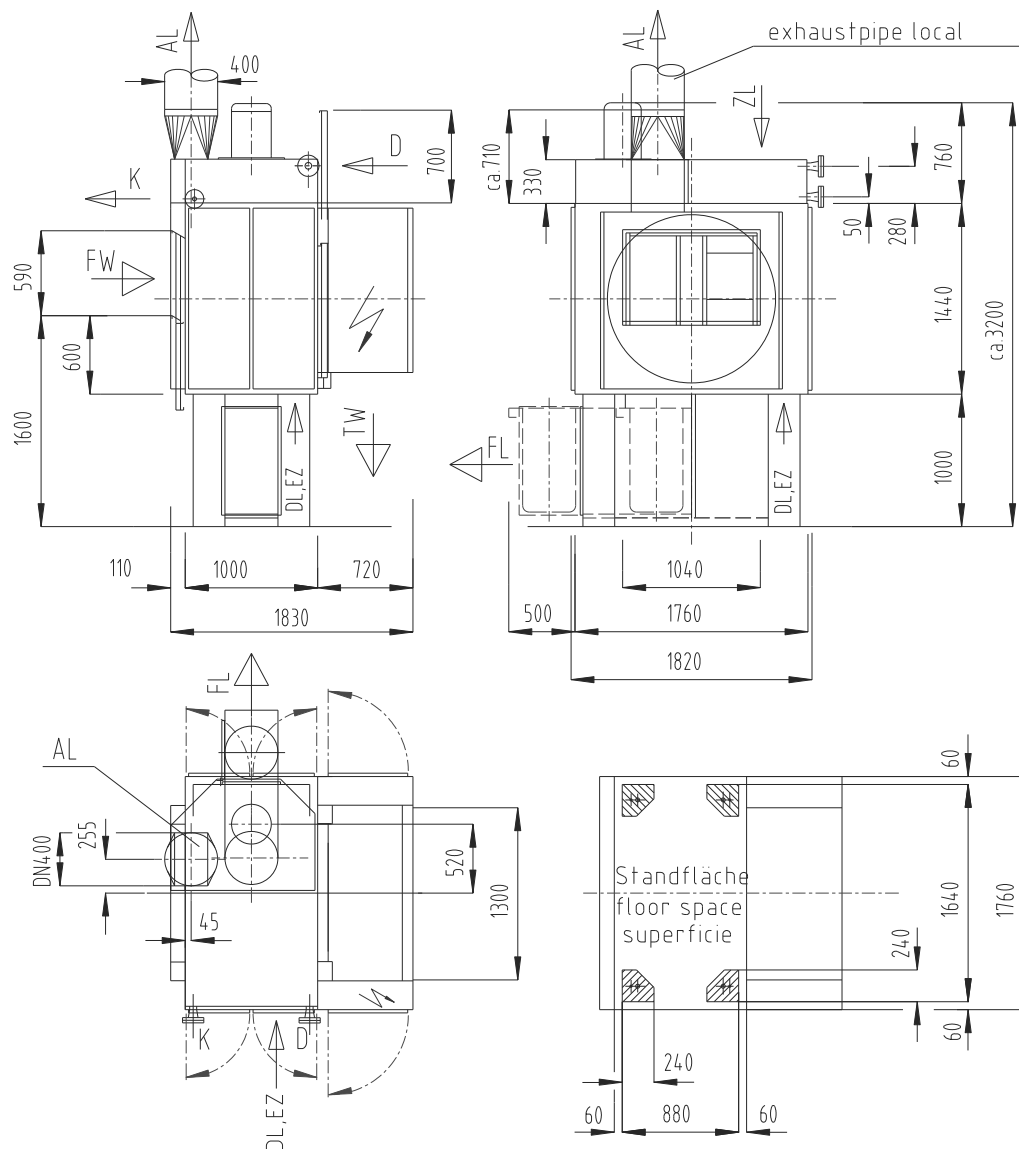
Exhaust air rate with recirculation drying cycle in operation 1300-2500 m³/h
Exhaust air rate with aerate drying + cool down cycle max. 5000 m³/h
Counter pressure from local exhaust pipe max. permissible 3,0 mbar

Packing

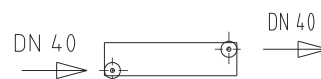
pedestal dismantled WxHxD ca. 2200x2500x2050 mm

Weights

Tumbler net 1500 kg
op. Weight approx. 1600 kg



Heating:
Hot Oil / Hot water



FW	= moist linen	
TW	= dry linen	
AL	= exhaust air	DN 400
ZL	= inlet air	
DL	= compressed air	DN 6
FL	= lint removal	
EZ	= electric supply	
D	= steam supply	DN40
K	= condensate	DN25

Entrance dimensions:	
Height	ca. 2350 mm
Width	ca. 2000 mm
Wall distance	ca. 600 mm
Foundation	
ea. Leg	ca. 400 kg